

DERWENT

# Colouring Media



Contains  
**techniques** and  
a **step by step**  
**project** by  
Karen Coulson.





# Derwent on the move!

## Download our **FREE** iPhone and iPad app today.



Find out about all the key features and benefits of our fine art pencils, accessories, sketch books and journals too!

If you are in an art store and don't know your Coloursoft from your Inktense, your sandpaper block from your waterbrush then just click on the Derwent app to find out all about the product.

Click through to helpful video tutorials to see the product in action and if you are looking for a store, our where to buy section will locate where you are, find your nearest stockist and give directions on how to get there.

**Now you can have Derwent in the palm of your hand!**



Available on the  
**App Store**

The Derwent app is available to download for free for iPhone and iPad from the App Store

|                             |              |
|-----------------------------|--------------|
| <b>Artists Pencils</b>      | <b>4-5</b>   |
| <b>Studio Pencils</b>       | <b>6-7</b>   |
| <b>Coloursoft Pencils</b>   | <b>8-9</b>   |
| <b>Metallic Pencils</b>     | <b>10-11</b> |
| <b>Collections</b>          | <b>12</b>    |
| <b>Techniques</b>           | <b>13-16</b> |
| <b>Step by step project</b> | <b>17-19</b> |

## DERWENT

Ever wanted to know how pencils are made?

Just visit **[www.pencils.co.uk](http://www.pencils.co.uk)** to see videos of our manufacturing process.

Here is where it all started.....

Legend has it that following a storm, huge trees were blown down exposing large solid masses of black material under their roots. It looked like coal but it did not burn.

Shepherds soon discovered that it was an excellent material for marking their sheep and local people discovered that it was possible to write and draw with the lumps of graphite. Strips of graphite were eventually encased in wood to produce the world's first pencils.

A cottage industry quickly developed, culminating in the formation of the Cumberland Pencil Company in 1832.

Production methods may have changed over the years, but today The Cumberland Pencil Company remains at the forefront of pencil manufacture with its world renowned brand of fine art pencils, Derwent.



# Artists Pencils



- Dry colour pencils
- Firm texture
- Thick lead, round pencil for freedom of movement
- Ideal for layering and blending
- 120 colours

The first colour pencil Derwent ever developed in the 1930s and used to be known as the No. 19 range. Its traditional round barrel and wide core makes it perfect for broad strokes and free, expressive drawing. Artists slightly waxy texture is ideal for multiple layering and blending to produce an infinite spectrum of subtly different hues and tints. Available in a fantastic range of 120 colours, Artists has stood the test of time.

If you prefer a crisper, more precise drawing style try our Studio pencil range which has a slim hexagonal barrel. The Studio colour core is identical to Artists so they complement each other perfectly.



Janie Pirie



Malcolm Cudmore

**Derwent Artists Pencils are available individually, in tins of 12, 24, 36, 72, collections and special wooden boxes.**

Visit [www.pencils.co.uk](http://www.pencils.co.uk) and click on hints & tips to view a video tutorial of this product in action!

**Don't forget** to check out the accessories section as well to see which Derwent accessories can be used with Artists Pencils.

# Artists Pencils Colour Chart

|                       |                         |
|-----------------------|-------------------------|
| 0000 Lime             | 4000 Turquoise Green    |
| 0100 Zinc Yellow      | 4100 Jade Green         |
| 0200 Lemon Cadmium    | 4110 Cobalt Green       |
| 0300 Gold             | 4120 Fir Green          |
| 0400 Primrose Yellow  | 4130 Spruce Green       |
| 0410 Champagne        | 4140 Distant Green      |
| 0500 Straw Yellow     | 4150 Phthalo Green      |
| 0510 Buttercup Yellow | 4200 Juniper Green      |
| 0600 Deep Cadmium     | 4300 Bottle Green       |
| 0700 Naples Yellow    | 4400 Water Green        |
| 0800 Middle Chrome    | 4500 Mineral Green      |
| 0900 Deep Chrome      | 4600 Emerald Green      |
| 1000 Orange Chrome    | 4700 Grass Green        |
| 1100 Spectrum Orange  | 4800 May Green          |
| 1200 Scarlet Lake     | 4900 Sap Green          |
| 1300 Pale Vermilion   | 5000 Cedar Green        |
| 1400 Deep Vermilion   | 5010 Green Grey         |
| 1410 Bright Red       | 5100 Olive Green        |
| 1500 Geranium Lake    | 5110 Moss Green         |
| 1600 Flesh Pink       | 5120 Light Moss         |
| 1610 Light Sienna     | 5130 Chartreuse         |
| 1620 Salmon           | 5140 Green Earth        |
| 1630 Ash Rose         | 5150 Parchment          |
| 1700 Pink Madder Lake | 5160 Olive Earth        |
| 1800 Rose Pink        | 5200 Bronze             |
| 1810 Rioja            | 5300 Sepia              |
| 1900 Madder Carmine   | 5310 Felt Grey          |
| 1910 Claret           | 5400 Burnt Umber        |
| 2000 Crimson Lake     | 5500 Vandyke Brown      |
| 2100 Rose Madder Lake | 5600 Raw Umber          |
| 2110 Plum             | 5700 Brown Ochre        |
| 2120 Grape            | 5710 Light Ochre        |
| 2200 Magenta          | 5720 Yellow Ochre       |
| 2210 Heather          | 5800 Raw Sienna         |
| 2220 Soft Violet      | 5900 Golden Brown       |
| 2300 Imperial Purple  | 6000 Burnt Yellow Ochre |
| 2400 Red Violet Lake  | 6100 Copper Beech       |
| 2410 Slate Violet     | 6200 Burnt Sienna       |
| 2500 Dark Violet      | 6300 Venetian Red       |
| 2600 Light Violet     | 6400 Terracotta         |
| 2700 Blue Violet Lake | 6410 Sunset Gold        |
| 2800 Delft Blue       | 6420 Autumn Leaf        |
| 2810 Royal Blue       | 6430 Rust               |
| 2820 Mid Ultramarine  | 6440 Light Rust         |
| 2830 Teal Blue        | 6450 Mahogany           |
| 2840 Pale Ultramarine | 6460 Burnt Rose         |
| 2900 Ultramarine      | 6470 Mars Violet        |
| 3000 Smalt Blue       | 6480 Taupe              |
| 3100 Cobalt Blue      | 6490 Bistre             |
| 3200 Spectrum Blue    | 6500 Burnt Carmine      |
| 3300 Light Blue       | 6600 Chocolate          |
| 3400 Sky Blue         | 6610 Mars Black         |
| 3500 Prussian Blue    | 6700 Ivory Black        |
| 3600 Indigo           | 6800 Blue Grey          |
| 3610 Ash Blue         | 6900 Gunmetal           |
| 3620 Phthalo Blue     | 6910 Storm Grey         |
| 3700 Oriental Blue    | 7000 French Grey        |
| 3710 Midnight Blue    | 7100 Silver Grey        |
| 3800 Kingfisher Blue  | 7110 Felt Mist          |
| 3900 Turquoise Blue   | 7200 Chinese White      |

● tin of 12 ● tin of 24 ● tin of 36 ● wooden box of 48 ● tin of 72 ● wooden box of 120  
 Please note that the contents may be substituted at any time with a product equal or superior to that specified.



# Studio Pencils



- Dry colour pencils
- Firm texture
- Thin lead, hexagonal pencil for control
- Ideal for detailed illustrations
- 72 colours

If you like the texture and blendability of Artists colour pencils, but prefer a crisper, more precise drawing style, this pencil is for you. Studio shares the same colour core as Artists, but it is slimmer and the wood barrel is hexagonal rather than round.

The result? A colour pencil that is easy to grip and particularly suited to detailed illustration work, such as botanical studies, architectural drawing and graphic design. All tend to be studio-based – hence the name.



Liz Dullea



Irina Garmashova

**Derwent Studio Pencils are available individually, in tins of 12, 24, 36 72, collections and special wooden boxes.**

Visit [www.pencils.co.uk](http://www.pencils.co.uk) and click on hints & tips to view a video tutorial of this product in action!

**Don't forget** to check out the accessories section as well to see which Derwent accessories can be used with Studio Pencils.

# Studio Pencils Colour Chart

|                     |        |                       |        |
|---------------------|--------|-----------------------|--------|
| 01 Zinc Yellow      | •••    | 37 Oriental Blue      | •••••• |
| 02 Lemon Cadmium    | •••••• | 38 Kingfisher Blue    | •••••• |
| 03 Gold             | •••••• | 39 Turquoise Blue     | •••••• |
| 04 Primrose Yellow  | •••••• | 40 Turquoise Green    | •••••• |
| 05 Straw Yellow     | •••••• | 41 Jade Green         | •••••• |
| 06 Deep Cadmium     | •••••• | 42 Juniper Green      | •••••• |
| 07 Naples Yellow    | •••••• | 43 Bottle Green       | •••••• |
| 08 Middle Chrome    | •••••• | 44 Water Green        | •••••• |
| 09 Deep Chrome      | •••••• | 45 Mineral Green      | •••••• |
| 10 Orange Chrome    | •••••• | 46 Emerald Green      | •••••• |
| 11 Spectrum Orange  | •••••• | 47 Grass Green        | •••••• |
| 12 Scarlet Lake     | •••••• | 48 May Green          | •••••• |
| 13 Pale Vermillion  | •••••• | 49 Sap Green          | •••••• |
| 14 Deep Vermillion  | •••••• | 50 Cedar Green        | •••••• |
| 15 Geranium Lake    | •••••• | 51 Olive Green        | •••••• |
| 16 Flesh Pink       | •••••• | 52 Bronze             | •••••• |
| 17 Pink Madder Lake | •••••• | 53 Sepia              | •••••• |
| 18 Rose Pink        | •••••• | 54 Burnt Umber        | •••••• |
| 19 Madder Carmine   | •••••• | 55 Vandyke Brown      | •••••• |
| 20 Crimson Lake     | •••••• | 56 Raw Umber          | •••••• |
| 21 Rose Madder Lake | •••••• | 57 Brown Ochre        | •••••• |
| 22 Magenta          | •••••• | 58 Raw Sienna         | •••••• |
| 23 Imperial Purple  | •••••• | 59 Golden Brown       | •••••• |
| 24 Red Violet Lake  | •••••• | 60 Burnt Yellow Ochre | •••••• |
| 25 Dark Violet      | •••••• | 61 Copper Beech       | •••••• |
| 26 Light Violet     | •••••• | 62 Burnt Sienna       | •••••• |
| 27 Blue Violet Lake | •••••• | 63 Venetian Red       | •••••• |
| 28 Delft Blue       | •••••• | 64 Terracotta         | •••••• |
| 29 Ultramarine      | •••••• | 65 Burnt Carmine      | •••••• |
| 30 Smalt Blue       | •••••• | 66 Chocolate          | •••••• |
| 31 Cobalt Blue      | •••••• | 67 Ivory Black        | •••••• |
| 32 Spectrum Blue    | •••••• | 68 Blue Grey          | •••••• |
| 33 Light Blue       | •••••• | 69 Gunmetal           | •••••• |
| 34 Sky Blue         | •••••• | 70 French Grey        | •••••• |
| 35 Prussian Blue    | •••••• | 71 Silver Grey        | •••••• |
| 36 Indigo           | •••••• | 72 Chinese White      | •••••• |

• blister of 6 • tin of 12 • tin of 24 • tin of 36 • wooden box of 48 • tin of 72 • wooden box of 72  
Please note that the contents may be substituted at any time with a product equal or superior to that specified.

# Coloursoft Pencils



- Dry colour pencils
- Very soft, smooth texture
- Ideal for mixing and blending
- Fast colour laydown
- 72 vibrant colours

Coloursoft Pencils are the softest of pencils but in a strong and vibrant range of 72 colours.

The velvety softness of the core releases rich, dense colour at a stroke and is perfect for mixing and blending. Despite its soft texture, Coloursoft sharpens to a fine point and works equally well for detailed illustrations or bold, contemporary still-life drawings and portraiture.



Nicole Caulfield



Suzy Herbert

Derwent Coloursoft Pencils are available individually, in a blister pack of 6, a tin of 6 skintone colours, in tins of 12, 24, 36 and 72, collections and special wooden boxes.

Visit [www.pencils.co.uk](http://www.pencils.co.uk) and click on hints & tips to view a video tutorial of this product in action!

**Don't forget** to check out the accessories section as well to see which Derwent accessories can be used with Coloursoft Pencils.





# Metallic Pencils

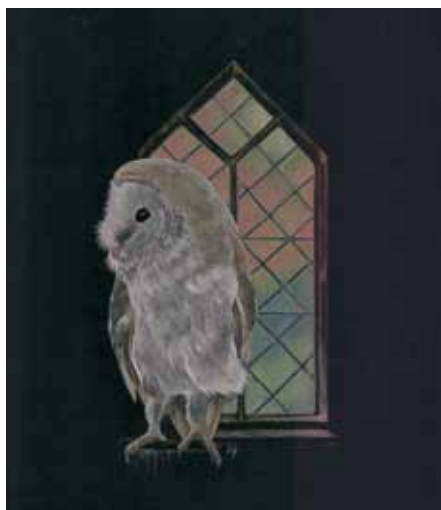


- Water-soluble
- Shimmer and sparkle
- Stunning on black paper
- 12 shimmering colours

Introduce a little sparkle to your sketches and drawings with these bright, highly reflective pencils. They work best on a dark background and can be used on their own or with other media to add brilliant definition and glowing highlights.

Derwent Metallic is water-soluble, so you can create interesting line and wash effects. Great for all kinds of creative projects.

Carole Gordon



Carole Gordon



Derwent Metallic Pencils are available individually, in blister packs of 6 traditional and coloured, in tins of 12 and collections.

Visit [www.pencils.co.uk](http://www.pencils.co.uk) and click on hints & tips to view a video tutorial of this product in action!

**Don't forget** to check out the accessories section as well to see which Derwent accessories can be used with Metallic Pencils.

# Metallic Pencils Colour Chart

|   |                 |   |   |
|---|-----------------|---|---|
|  | 80 Silver       |  |  |
|  | 81 Pewter       |  |  |
|  | 82 Gold         |  |  |
|  | 83 Antique Gold |  |  |
|  | 84 Bronze       |  |  |
|  | 85 Copper       |  |  |
|  | 86 Yellow       |  |  |
|  | 87 Red          |  |  |
|  | 88 Pink         |  |  |
|  | 89 Purple       |  |  |
|  | 90 Blue         |  |  |
|  | 91 Green        |  |  |

 traditional blister of 6    coloured blister of 6    tin of 12  
Please note that the contents may be substituted at any time with a product equal or superior to that specified.



Michelle Law

# Collections



Derwent offers a wide selection of colour pencils ranging from the traditional Artists to the fine Studio pencils; from the soft yet vibrant Coloursoft to the sparkling Metallic colours. The ranges can be used on their own or work beautifully together to create a great range of colours and tones.

Derwent has combined a selection of all their colour media plus accessories as the perfect introduction to the world of colour.



Suzy Herbert



Suzy Herbert

**Derwent Colour Collections are available in tins of 12, 24, 36 and a wooden box.**

Visit **[www.pencils.co.uk](http://www.pencils.co.uk)** and click on hints & tips to view a video tutorial of these ranges and accessories in action!



# Colouring techniques using accessories

## Burnisher

A Burnisher pencil can be used in several ways to create different effects.

**Image 1** shows the Burnisher being used to “polish” the colours together in a petal. By pushing down hard using a small circular stroke the colours are blended together and a slight sheen is left over the surface of the petal. Once the image has been burnished it is very hard to add more colour over the top.

In **image 2** the Burnisher has been used first as a resist. When the other colours were added to the image, the resist remains in place representing all the “white” marks.



## Blender

A blending pencil is used to blend/ mix the colours together on the paper. It has the advantage that more colour can be added over the top as it does not act as a resist. It also leaves a matt finish rather than a sheen finish.

**Image 3** shows the Blending Pencil being used to blend/mix three colours together in a background made up of three Coloursoft colours.



# Colouring techniques using accessories

## Battery Eraser

The Battery Eraser can be used to erase unwanted marks in several ways.

**Image 4** shows the eraser being used to tidy up an edge of completed background before the iris is completed.

**Image 5** shows the eraser being used with the eraser shield. The shield has many different shaped apertures that can be used for adding highlights or in this case re-establishing white marks in the butterflies wings.



## Embossing Tools

There are two embossing tools available in the Derwent range. One has a fine point and the other slightly wider.

**Image 6** shows the fine tool being used to indent the paper before colour is added.

**Image 7** shows the same image once the colour has been added. The fine white lines are where the tool has been used first. It is a good idea to emboss more lines than you need as inevitably a few become lost as the colour is added.



# Colouring techniques using accessories

## Embossing Tools continued

**Image 8** shows an eye where the upper eyelashes were indented with the fine tool.

**Image 9** shows an owl's beak. Around the beak the lines were indented to indicate delicate feathers.

**Image 10** shows an example where the larger pointed tool was used to indent small white dots in the butterflies wings and lines to indicate body shape before the dark colours were added.



# Colouring techniques using accessories

## French Curve

This miniature French curve is ideal for drawing ellipses and accurate curves.

**Image 11** shows the French curve being used to draw the edge of the butterfly's wing. It can be used as a shield with the Battery Eraser to tidy up the edge once the wing has been completed.

It can also be used as a guide with an Embossing tool to indent a curve or ellipse.

## Pencil Sharpener

One of the most important tools a pencil artist has apart from their pencils is a pencil sharpener. It is important to keep a sharp point on your pencil, especially when working on a fine detailed picture.

There are many different types of sharpeners available including battery operated ones and a craft knife.

**Image 12** shows a pocket size sharpener with a reservoir for the waste which is ideal to carry with your pencils at all times.



For more techniques visit  
the hints & tips section at  
[www.pencils.co.uk](http://www.pencils.co.uk)



**Materials used:**

**Metallic Pencils:** Yellow 86, Red 87, Purple 89 and Green 91.

**Studio Pencils:** Lemon Cadmium 02, Orange Chrome 10, Deep Vermillion 14 and Copper Beech 61.

**Artists Pencils:** Lemon Cadmium 0200, Rose Pink 1800, Imperial Purple 2300, Light Violet 2600, Mineral Green 4500, Olive Green 5100 and Chinese White 7200.

**Coloursoft Pencils:** Bright Orange C080, Red C120, Blush Pink C180, Indigo C300, Dark Brown C520 and Peach C560

**Accessories:** Blending Pencil, Burnisher, Battery Eraser, Super Point Sharpener (optional) and Embossing Tool

**Paper:** A4 piece of Derwent Watercolour Paper.

1

**Step 1:**

Transfer the line drawing onto your chosen paper.

**Step 2:**

For the background, use Coloursoft Pencils and apply in three layers as shown in the image. First apply a layer of Red C120 and Bright Orange C080 in an irregular/patchy pattern. Next apply a layer of Indigo C300 with pencil strokes that are at right angles to the first layer. Finally apply a layer of Dark Brown C520 with the pencil strokes at right angles to the previous layer.

**TIP:** Turn the piece of paper, rather than your hand, when building up layers of colour at right angles to each other.

Use the Blending Pencil with a firm, small circular stroke to push all the layers of colour together.

Complete the whole background in this way.

2





### Step 3:

Before starting to colour the flower, tidy up the outline of the flower with the Battery Eraser to leave a sharp crisp edge between the flower and the background.

For the beards in the flower use the Embossing Tool to indent tiny lines which will remain white as the beards are completed.

**TIP:** Emboss plenty of lines, as some will become lost as the colours are added.

Keeping your pencils really sharp (the Derwent Super Point Sharpener is ideal for really sharp points), use Studio Lemon Cadmium 02 applied in tiny strokes, followed by Orange Chrome 10 and finally Deep Vermillion 14.

For the upright peach petals, start with

Coloursoft Blush Pink C180. Draw in the darkest areas of the petals, starting at the base working upwards in long strokes letting the pressure become lighter as you work away from the base of the petal.

Draw in the lightest areas of the petals with Artists Rose Pink 1800.

Now cover all the upright petals with Coloursoft Peach C560.

Finally use Studio Copper Beech 61 to define/darken the very base of the petals and draw a few darker lines up the petals. Use the Burnisher to blend all the layers together, at the same time this will also add sheen to the petals.

### Step 4:

For the falling mauve petals, start with Artists Imperial Purple 2300 to define the darkest areas of the petals, again work the pencil strokes the length of the petals. Apply Chinese White 7200 to the very edges of the petals for the lightest areas. Cover all the falling petals with a layer of Light Violet 2600. Finally use Metallic Purple 89 to define the darkest areas. Add a tiny amount of Coloursoft Peach C560 to the centre of the mauve petals.

4



### Step 4 continued:

Pressing firmly go over all the purple petals with Artists Chinese White 7200 to blend all the layers together and at the same time slightly lighten the mauve.

Now the petals are complete, if required, very carefully tidy up outside edges with Studio Copper Beech 61 by drawing around any soft edges to make them sharp/crisp again. If the Copper Beech is noticeable carefully go around with the Blending Pencil to blend the excess colour into the background.

### Step 5:

For the lightest areas in the stem and sepal use Artists Lemon Cadmium 0200 followed by Metallic Yellow 86, keeping your pencil strokes travelling the length of the stem and following the curves of the sepal.

Use Coloursoft Indigo C300 followed by Studio Copper Beech 61 for the darkest areas.

Go over the whole area with Artists Olive Green 5100 followed by Mineral Green 4500. Use the Blending Pencil if necessary to blend the colours together.

Finally add a little more Metallic Yellow 86 down the centre of the stem with Metallic Green 91 each side to really lift the lightest areas.

Add a few strokes of Metallic Red 87 into the beards and a little Metallic Purple 89 to define the centre of the purple petals if required.

**Your drawing is now complete!**

5



DERWENT

# Colouring Media



For more hints and tips,  
techniques and projects  
visit the hints and tips  
section of our website at  
**[www.pencils.co.uk](http://www.pencils.co.uk)**

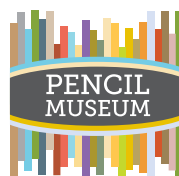
lovepencils  
the DERWENT blog

Tell us what you think about our products, keep up to date  
with our news and gossip on our lovepencils blog!

Find us at **[www.lovepencils.co.uk](http://www.lovepencils.co.uk)**



Be a fan and follow Derwent at  
**[www.facebook.com/welovepencils](http://www.facebook.com/welovepencils)**  
and **[www.twitter.com/derwentpencils](http://www.twitter.com/derwentpencils)**



Journey through the  
history of pencils at  
**[www.pencilmuseum.co.uk](http://www.pencilmuseum.co.uk)**

No: 2300410



Made in UK



Cumberland Pencil Company, Derwent House, Jubilee Road,  
Lillyhall Business Park, Workington, Cumbria, CA14 4HS

Tel: +44 (0)1900 609590

E-mail: [derwent.pencils@acco.com](mailto:derwent.pencils@acco.com)